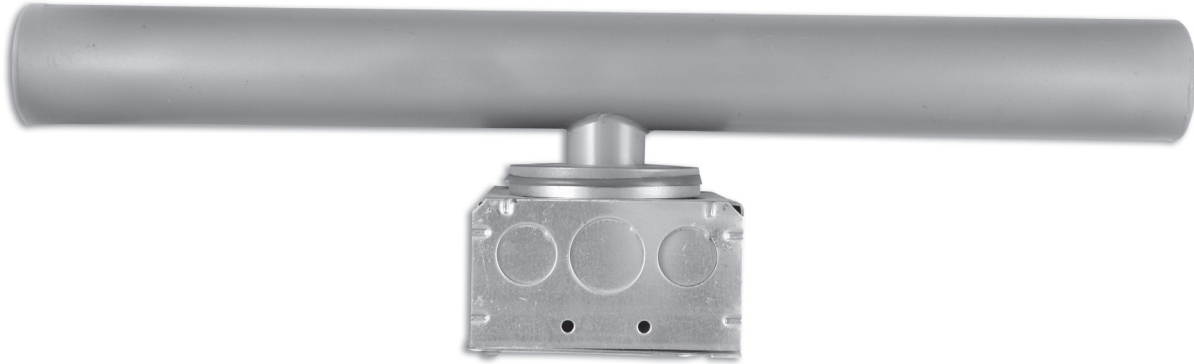




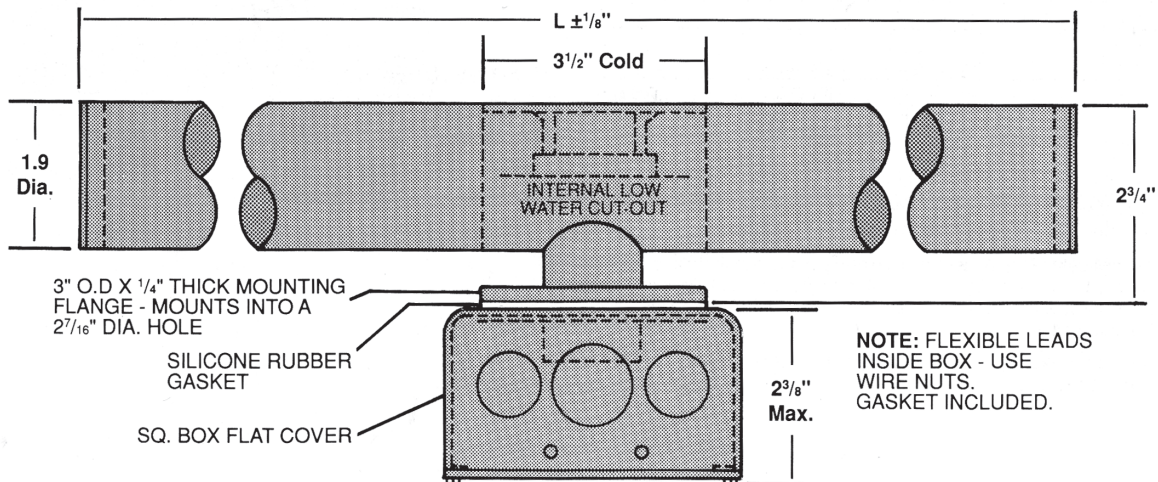
Cartridge Heaters

Special Immersion

U.L. Recognized-E56973



IMMERSION



Applications:

- Restaurant Steam Tables
- Humidifiers
- Water Tanks
- UL Recognized component. - E56973
- Food Cookers
- Process Water Heaters

Features:

- All stainless steel (316 L) with heliarc welds — No copper or braze material in contact with water.
- Patented—Low water protected—Automatic internal high limit—Shuts off heater, then resets itself.
- Flexible hook-up leads for wire nuts.
- Easy to clean.
- Easy mounting through a $2 7/8"$ diameter (2" knockout) hole in bottom or side of tank — No need for mounting fittings.
- Other sizes and ratings available — Consult factory.

▼ Manufactured Items ▼						
L Dim	Catalog Number	K.W.	Volts	Line Amps	Phase	
8	WB1511	1.5	120	12.5	1	
8	WB1521	1.5	208	7.2	1	
8	WB1541	1.5	240	6.3	1	
12	WB3011	3	120	25.0	1	
12	WB3021	3	208	14.4	1	
12	WB3041	3	240	12.5	1	
14	WB4021	4	208	19.2	1	
14	WB4041	4	240	16.7	1	
14	WB4051	4	480	8.3	1	
18	WB5021	5	208	24.0	1	
18	WB5041	5	240	20.8	1	
18	WB5051	5	480	10.4	1	
18	WB5023	5	208	13.9	3	
18	WB5043	5	240	12.0	3	
18	WB5053	5	480	6.0	3	
22	WB7023	7	208	19.4	3	
22	WB7043	7	240	16.8	3	
22	WB7053	7	480	8.4	3	

How To Order

- Specify Catalog Number from table above.